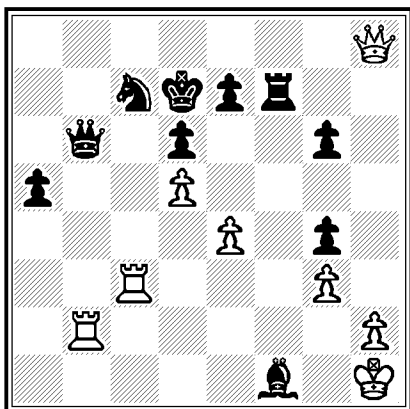


Seizing the open file. Something has gone very wrong for White.

35.♖b2 ♔b6 36.♕g2 ♘d7  
37.♕c3 ♗xb5!

Black has everything figured out. The safer 37...♗f6 wouldn't be as much fun.

38.♕h8† ♔d7 39.♖c3 ♗f1†!  
40.♕h1



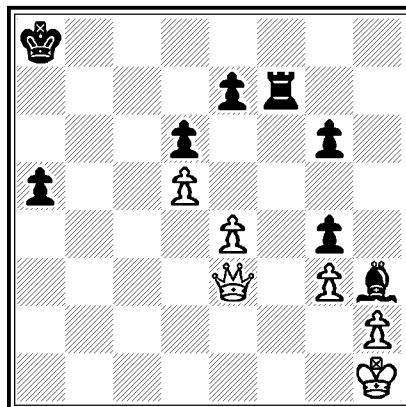
40...♕xb2?!

Winning nicely with a queen sacrifice, but 40...♗g2†! forced mate: 41.♕xg2 ♕xb2† 42.♖c2 ♕xc2† 43.♕g1 ♕b1† 44.♕g2 ♕f1 mate; or 41.♖xg2 ♗f1† 42.♖g1 ♕xg1 mate. A computer sees 40...♗g2†! in a flash, but it's a particularly difficult move for a person to see, as it gives up a piece in two different ways when there's a longer, but more easily calculated and safer, alternative. The author of the tournament Bulletin, a human being, gives 40...♕b2?! an "!".

Both players had now reached the time control. White has a series of checks, but Black wins by an instructive triangulation.

41.♖xc7† ♔xc7 42.♕xb2 ♗h3  
43.♕c3† ♔b8 44.♕b2† ♔a8  
45.♕h8† ♔b7 46.♕b2† ♔a6

47.♕e2† ♔a7 48.♕e3† ♔a8  
0:1



Black's king is back on a8 again, but this time White's queen is at e3, not b2, and White is out of checks.

A fascinating game, complete with the type of cute ending which often occurs in Suttles' games.

### Game 2

*Suttles System A00/5*  
**Suttles - Ostojić, P**  
*Belgrade, 1969*

### 1.g3

Why not? If the move works for Black, it should work even better for White. Shouldn't it?

It turns out this may not be the case. One reason is the psychological aspect of the opening. With White, most players feel compelled to play for an advantage, even to the point of being enraged when Black plays a defense such as 1...g6. With Black, the same players will play modestly, offering their opponents fewer chances for attack. 1...g6 is a counterpunching opening, but with nothing to counterpunch against, it is sometimes less effective.

There is also a theory that in some positions, especially those where